

So can my  
ITV digital box  
do anything else?





# contents

All this great stuff...

- 3 What's interactive?
- 4 Interactive TV programmes
- 6 Interactive sport
- 7 Games
- 8 Movies with ITV Select
- 10 Digital Text
- 12 ITV Active - Internet through your TV
- 14 Useful info

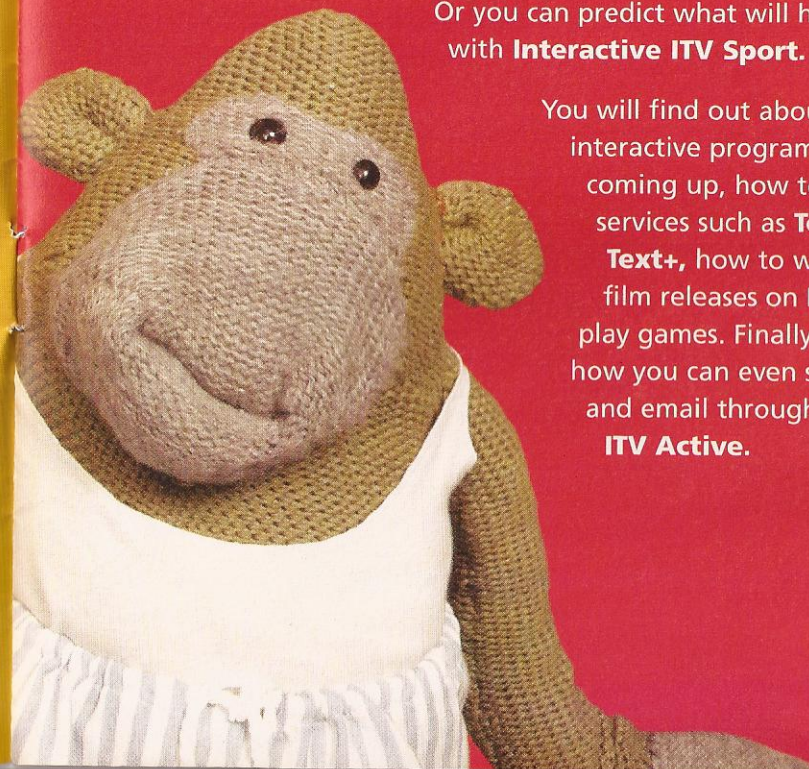


## Right, so what's this interactive stuff all about?

There are loads of fun and useful services available through your ITV Digital box, that you might not be aware of. This booklet tells you all about them without blinding you with technology, to help you get more out of your TV.

For instance, did you know that you can pit your wits interactively alongside the real contestants on **Who Wants To Be A Millionaire?** Or you can predict what will happen with **Interactive ITV Sport**.

You will find out about the exciting interactive programmes we've got coming up, how to use information services such as **Teletext** and **ITV Text+**, how to watch the latest film releases on **ITV Select** and play games. Finally take a look at how you can even surf the internet and email through your TV with **ITV Active**.





# So, can I play along with TV programmes?

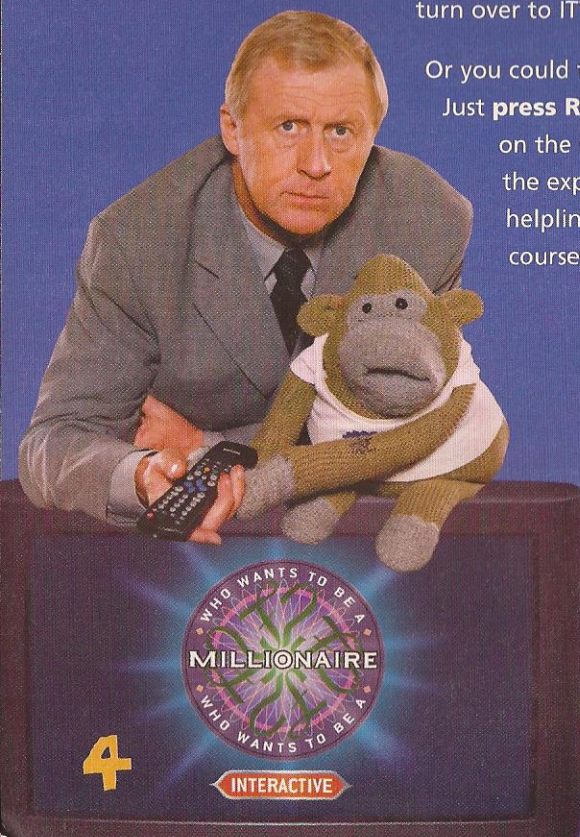
Yes, that's right. Whenever ITV1 is showing *Who Wants To Be A Millionaire?* ITV2 will broadcast the interactive version, so you can play along!

You will see the same questions the contestant does. Just press 1, 2, 3, or 4 on your ITV Digital remote control to answer. You will be playing against the clock so be quick. You score points for each right answer, alongside the contestants.

Collect enough points by the end of the game and you can enter a prize draw. It's brand new and exclusive to ITV Digital\* – turn over to ITV2 and find out more and start playing.

Or you could try interactive **This Morning** on ITV1.

Just **press RED** while watching to get information on the show, including recipes and advice from the experts. Also, **press YELLOW** to get helpline information and details on relevant courses from Learndirect.

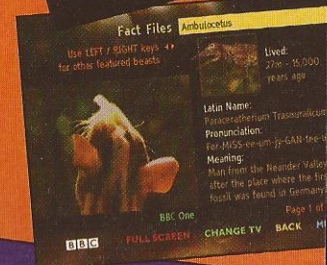
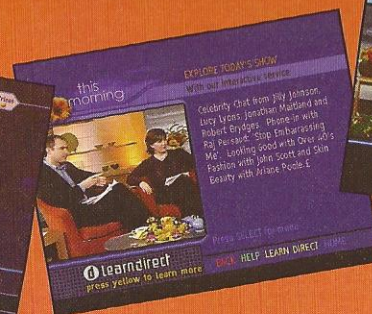
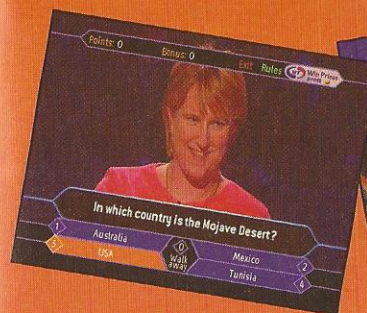


\*And Digital Terrestrial Television.

**Banzai**, the successful spoof Japanese betting game show, is back on E4 (and will be showing on Channel 4 in February). On ITV Digital you can play along with the show, placing bets on the show's increasingly bizarre scenarios. See whether you're black belt material by predicting the outcome and you could become the Banzai Master!

The latest jaw-dropping BBC series, **Walking with Beasts**, is now interactive. Walk with beasts like the Mammoth and the Sabre-toothed cat and as you do, **press RED** on your remote control to find out even more fascinating details – when they lived and what their world was like. See the extra information on your TV while you watch the programme, so you don't need to miss the fantastic special effects.

All interactive programmes have a **HELP** feature – should you need it.



Images supplied courtesy of Channel 4, BBCi, Celador and Carlton Active.



# Can I get more out of the game when I'm watching football?

ITV Digital has the best football. And now you can enjoy fantastic new interactive services for many of your favourite matches.

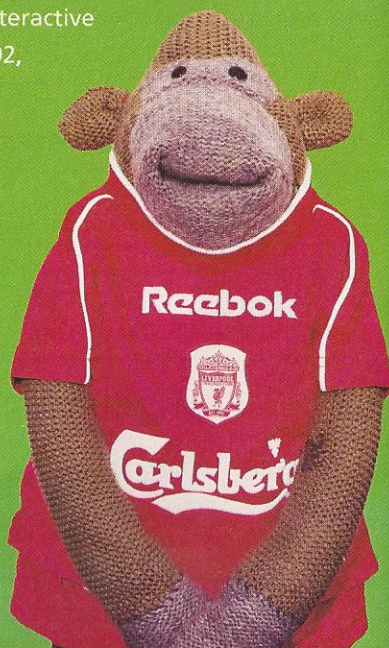
**Press RED** on your remote control when the prompt appears on screen, and get the latest results, sports and football news, fixture lists and league tables.

Or try some great interactive games in association with Littlewoods – like **Predictor**. Answer the questions with your predictions at the start of the match, and again at half time. If you get enough predictions right during the game, you can win a replica football shirt and tickets to some top games!

Last year, the BBC brought you interactive **Wimbledon** and **Golf**. Plus in 2002, BBCi is also launching **FA Cup Interactive**, and a range of other interactive sport events.

Interactive viewing gives sport coverage a new layer of detail – dive in and out of the information, take part in quizzes, find out player information and just get more involved.

Look out for the **Press RED** prompt on your favourite sports.



6

Images courtesy of Allsport, ARR, Carlton Active and BBCi.

# How do I keep Al's nephew quiet when he visits?

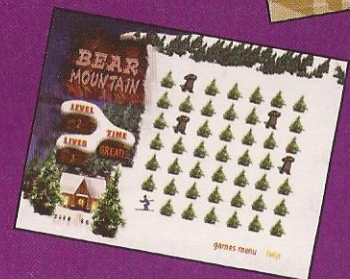
Well how about some interactive games from ITV Digital – that'll keep him quiet!

There are great games on ITV Digital, so the kids and Al don't get bored. We've had Strategy games like Tom and Jerry, Quizzes, Skill games and Card games such as Poker.

And the best bit is that all these games are available free as part of your basic ITV Digital subscription.

At the moment there's **Ski Bob**, a game of skill, and **Aqueduct**, a strategy game on your TV. Watch out for more exciting games in 2002.

Keep an eye out for information about new releases in TV7.



\*These games have been previously featured on ITV Digital.

7



# What if I want to watch the latest movies?

ITV Select will keep you in movies all through the day. A pay-per-view service, you only pay for what you order so there's no commitment or monthly subscription charge.

Movies are scheduled throughout the day, so you will always find a showing to suit you. ITV Select is on channels 50-55, broadcasting great movie premiers on ITV Digital like **Unbreakable**, **Billy Elliot** and **Coyote Ugly**.

So with the latest movies direct to your TV, that'll be the end of cold winter nights spent queuing, empty shelves at the video shop and late fees.

And as a seasonal extra our **Unreal Movie Deal** means that throughout Christmas we're offering any of our movies for just £1.99\* making them the best value blockbusters around!



\*You must order through your remote control. Offer ends 4th Jan 2002. Price for ITV Digital customers only. Non ITV Digital customers pay £2.99. Offer excludes For Adults Only and pay-per-view football.  
Bedazzled © 2000 Twentieth Century Fox. ARR. Unbreakable © Touchstone Pictures. ARR. Billy Elliot © 2000 Universal Studios. ARR. Coyote Ugly © 2000 Touchstone Pictures and Jerry Bruckheimer, Inc. ARR.

# What other entertainment does ITV Select offer?

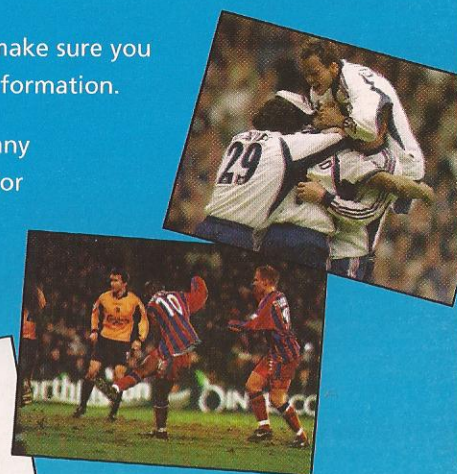
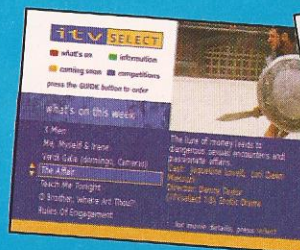
**For Adults Only** – available exclusively through ITV Select, For Adults Only brings you pay-per-view adult entertainment.

Ordering is quick, easy and discreet, through your remote – you simply pay for what you order, and the film will appear anonymously as an ITV Select 18 movie on your statement. There's a variety of adult entertainment to choose from on channels 56 and 57, showing the best UK, American and Continental adult programmes and movies from just £3.99. Or you can purchase Nightly Tickets for just £5.99,\* so you can watch the entire night's programming with just one single order.

**ITV Sport Select** – this season's live pay-per-view **Premiership** matches can be purchased on an individual basis through **ITV Sport Select** on channel 98.

To enjoy such great pay-per-view entertainment, make sure you have the latest software – see page 14 for more information.

You'll need to know your Parental Code to order any ITV Select 12, 15 or 18 rated movie – see page 15 for more details.



\*Non ITV Digital Customers pay £1 extra. Images courtesy of Allsport. ARR.



# How do I get the latest news and other useful info?

Sports results, news headlines, lottery numbers, TV information and lots more can be found on the wide range of information services available.

These are easy to use, look great, and cover a wide selection of subjects. On some, you can still watch TV while looking up the latest stuff. All of these services are available 24hrs a day, as part of your basic ITV Digital subscription.

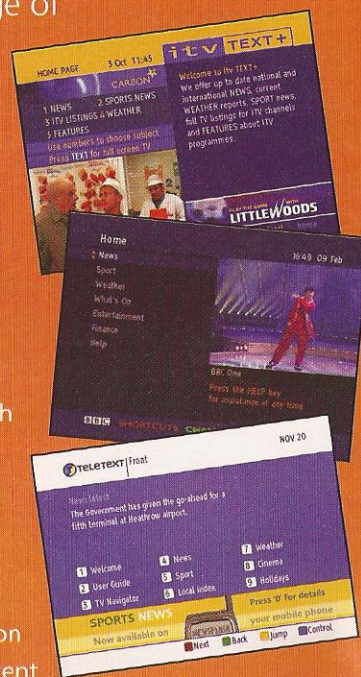
**ITV Text+** – go to channel 16 and press TEXT. You'll find the latest national and regional news, weather, sport, ITV Listings and ITV programme highlights, all while you watch your favourite ITV programme.

**BBCi Text** – from the latest news headlines to entertainment and finance news, TV Listings and sport. Press TEXT from any BBC channel.

Coming soon the BBCi bar will provide extra information on the programme you're watching, links to related BBC content and the latest news, sport, weather and national lottery headlines.

**Teletext** – this service takes Teletext to a new dimension. Simple to use, it's full of useful information, news, betting and some fantastic bargain holidays. Go to channel 9 and press TEXT.

**Four Text** – the new digital text service which compliments Channel 4's three channels (Channel 4, Film Four and E4). Expect to see show highlights, previews, listings and more. To access FourText, press TEXT from channels 4, 41 and 42.

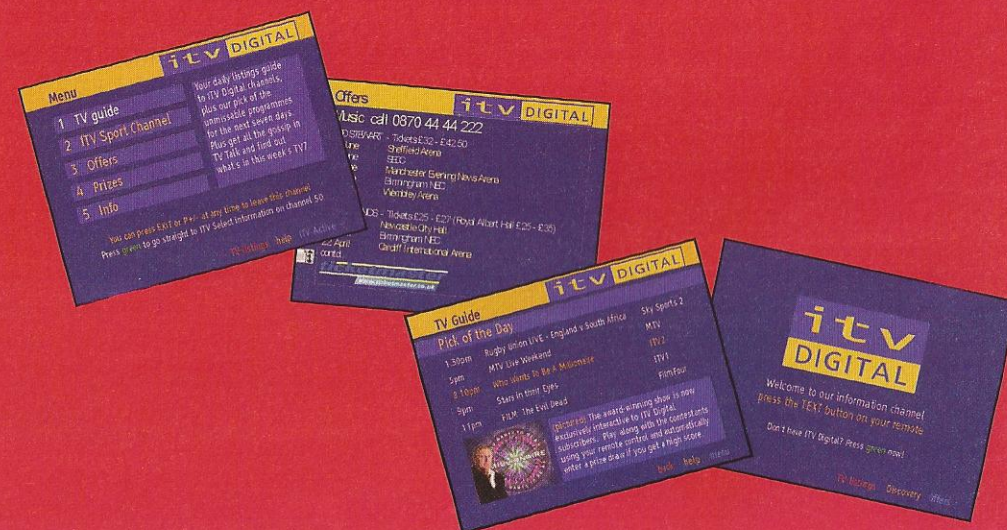


# What's the ITV Digital information channel?

Want to know what's on TV tonight? Fancy winning a great prize? Or want to take advantage of some fantastic money-saving deals?

Go to channel 88 and take a look at:

- ★ TV Guide – today's listings for ITV Digital channels
- ★ Everything you need to know about the ITV Sport Channel
- ★ The latest special offers and deals
- ★ Competitions to win football tickets, prizes and goodies like videos and DVDs
- ★ Customer Service information, plus all the latest news on ITV Digital's products and services.





# What about the internet through your TV?

Take the next step with ITV Active.

**ITV Active** lets you to do things through your TV that you never thought possible – shopping, banking,\* betting, playing games and firing off emails to your friends. Essentially, it's the internet through your TV.

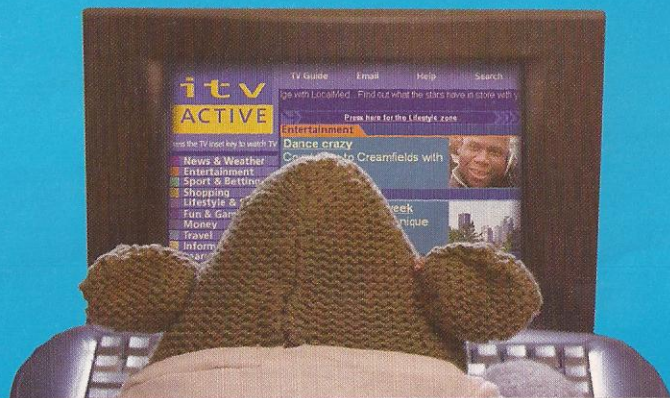
Visit millions of websites, gossip online and do your weekly shop at Tesco all through your TV. And with picture-in-picture, you can watch TV while you surf.

ITV Active is great for shopping from home. With over 100 household names like WHSmith, Tesco and Lastminute.com available on your TV, it's the high street in your front room.

Football is even more exciting! You can tell other football fans just what you think of the game by sending in your comments and seeing them on TV. You can see breaking match results and bet on the action as it happens.

Don't just watch your favourite programmes, have your say with other viewers, vote, and soon play gameshows online. So, if you want to get more out of Corrie or want to play Who Wants To Be A Millionaire? get ITV Active.

\*Banking services currently limited to viewing balance and statements for most of the main high street banks.  
Carl Cox photograph: © Rex Features. ARR.



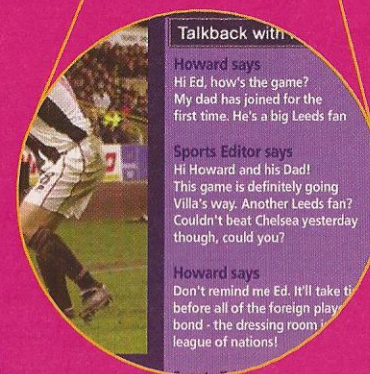
# What do I get?

With ITV Active you get the internet, 5 email addresses, games, parental control, safer shopping from leading names, and more through your TV from £5 a month.

ITV Active works with a TV and plugs into a phoneline. Subscribe to the service for just £5 a month\*, and you'll get a small box and cordless keyboard, (so you can use it pretty much anywhere in your living-room). And there are parental controls too, to help stop your kids seeing unsuitable material.

We'll deliver the free box, keyboard and simple set-up instructions and you'll be surfing the internet on your TV in no time.

Call now on **0808 100 0101**



\*£8 per month if you do not subscribe to ITV Digital.



# Anything else I might need to know?

## Is this interactive stuff easy to use?

The following buttons are used on interactive services:

**TEXT** – this brings up any of the Information and text services on ITV Digital. Also, this button takes you to Digital Text service from any of the channels available from Channel 4 or the BBC.

**RED** – press RED to bring up the interactive screens on programmes such as The Premiership and Walking with Beasts.

**COLOUR BUTTONS** – they take you to different parts of a service. Look for coloured text along the bottom of the screen and press the corresponding button. Sometimes, pressing a button will bring up a list – press the UP and DOWN arrow buttons and the SELECT button to choose.

**ARROW KEYS and SELECT** – to choose an item, move to it and press SELECT

**NUMBER BUTTONS** – these can also be used to make selections. If you see a number next to an option, press the corresponding key. For example, these buttons are used to choose your answers on Who Wants To Be A Millionaire?

**EXIT** – press this button to leave an interactive service. Pressing the Programme + - buttons to change channel will also make an application disappear.

## How do I get interactive Who Wants To Be A Millionaire?

Just switch over to ITV2, wait for the prompt and press the RED button. You will need to load the Millionaire game by pressing standby on your remote control for three seconds, release and then press standby again, you are ready to play.

## Do I need to upgrade the software in my box?

You may need to. It's essential this is done regularly to ensure your box works correctly with the latest interactive services. Your ITV Digital box will soon have a new feature by which it can update itself. If you see a prompt to do this, follow the on screen instructions.

To upgrade now, press MENU on your ITV Digital remote control, then select option 7 – Technical Information, then option 3 – Auto Update. This will take a few minutes to complete. If your box displays Update Error you already have the latest software.

Also, do you have the latest channel line up? Check this with our add channels function. Select MENU on your ITV Digital remote control, select option 5 Getting Started and then option 3 Add channels.

## What is my Parental code?

This code is needed when you want to order an ITV Select movie or update certain features on your ITV Digital box. If you're not sure what this number is and need to use it, contact ITV Digital customer services.

## Can I receive all these services on an integrated digital TV?

Most of the services in this guide work on an integrated digital TV (DTV)\*. However, there are a few things that only work with an ITV Digital box, or look slightly different on a DTV.

Unfortunately, our games channel and ITV Select only work with an ITV Digital box. We are working to change this, and we will keep you posted on further developments as they happen.

## How do I plug in my phone line?

We advise you to do this so you can simply order ITV Select films with your remote control. It will also mean you are ready to start using some great new interactive features coming up in the future. If you still have the phone lead that came with your box, plug this into the back of your ITV Digital Box in the Modem socket and put the other end into your phone socket, and get your movie.

## Do I need any extra equipment to receive these services?

Everything, except ITV Active, is received through your TV aerial. So all you need is ITV Digital, your remote control and a TV. If you want all the extra benefits of internet access and email through your TV, then we will send you everything you need to get online with ITV Active.

## Useful Contacts

ITV Select – to order a movie use your remote control or call the number shown on the screen.

If you have any questions or problems with any of our services please call us on **0870 600 9696**

\*At time of printing Sony iDTV sets do not support interactive Who Wants To Be A Millionaire? However this should soon be available.



# Look at your TV in a completely different way with ITV Active

To get more out of your telly – more excitement,  
more entertainment – go interactive with ITV Active.

- \* Email family and friends – no need to buy a PC
- \* Surf millions of websites
- \* Do your weekly shop with Tesco – no waiting, no hassle
- \* Soon you'll be able to play Who Wants To Be A Millionaire? online!
- \* Great value – from £5 a month for ITV Digital customers
- \* Low call charges from only 1p per minute
- \* A box the size of a paperback book – simply plugs into your existing TV and a phoneline – free while you subscribe
- \* Full size infrared cordless keyboard – interact all over the living room

To get ITV Active call now on  
**0808 100 0101**



Important information: ITV Digital is available subject to coverage, status and terms. ITV Active is available subject to status, terms and a 12 month minimum term. Subscription costs from £5 per month for ITV Digital subscribers and call charges will be incurred when using the service. ITV Active box and keyboard provided on free loan while you subscribe and a phone line is required. MHEG services may be limited by the use of subtitles.

©ITV Digital 2001. Registered Office: ITV Digital plc, 346 Queenstown Road, London SW8 4DG. Registered Number 3302715.